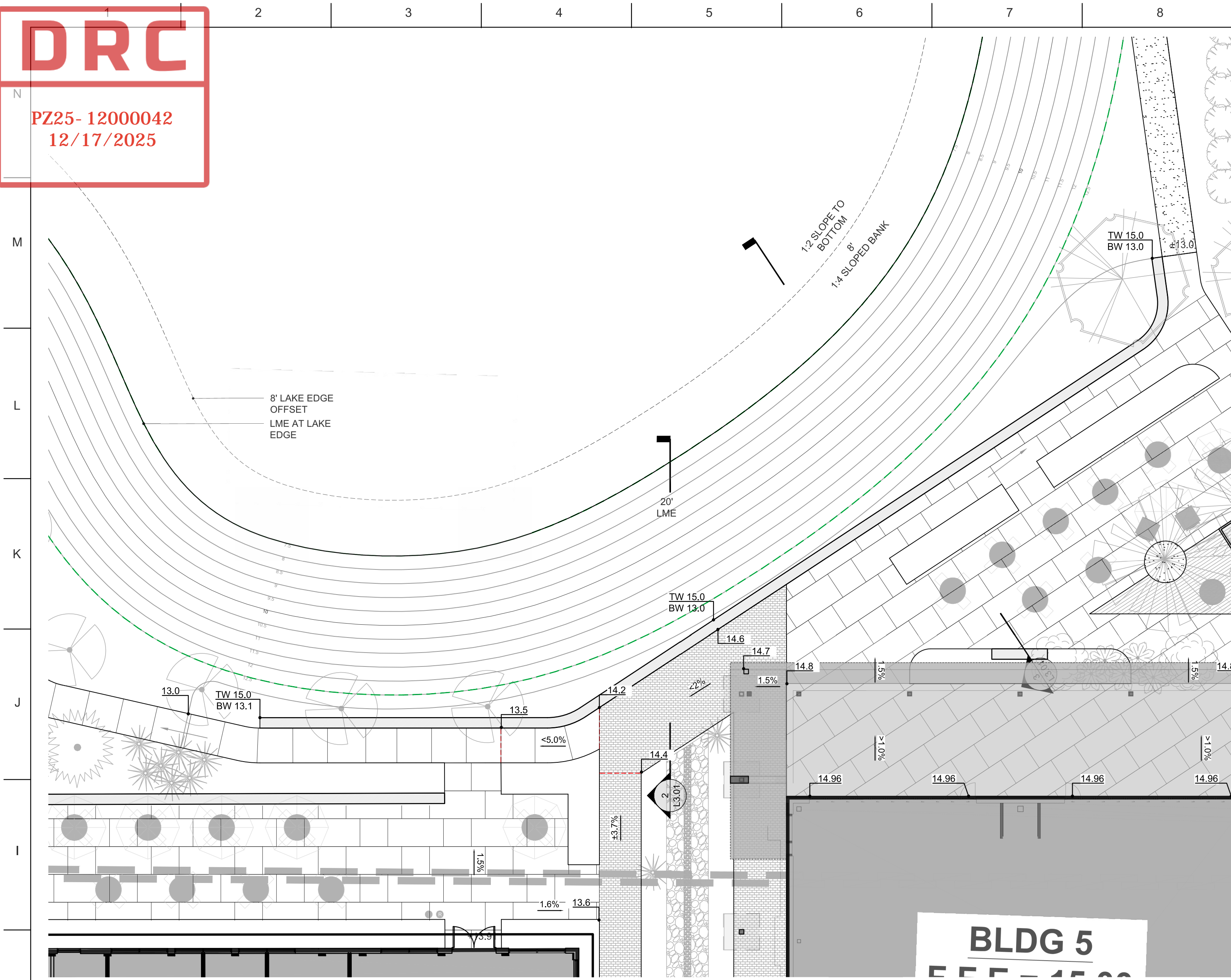
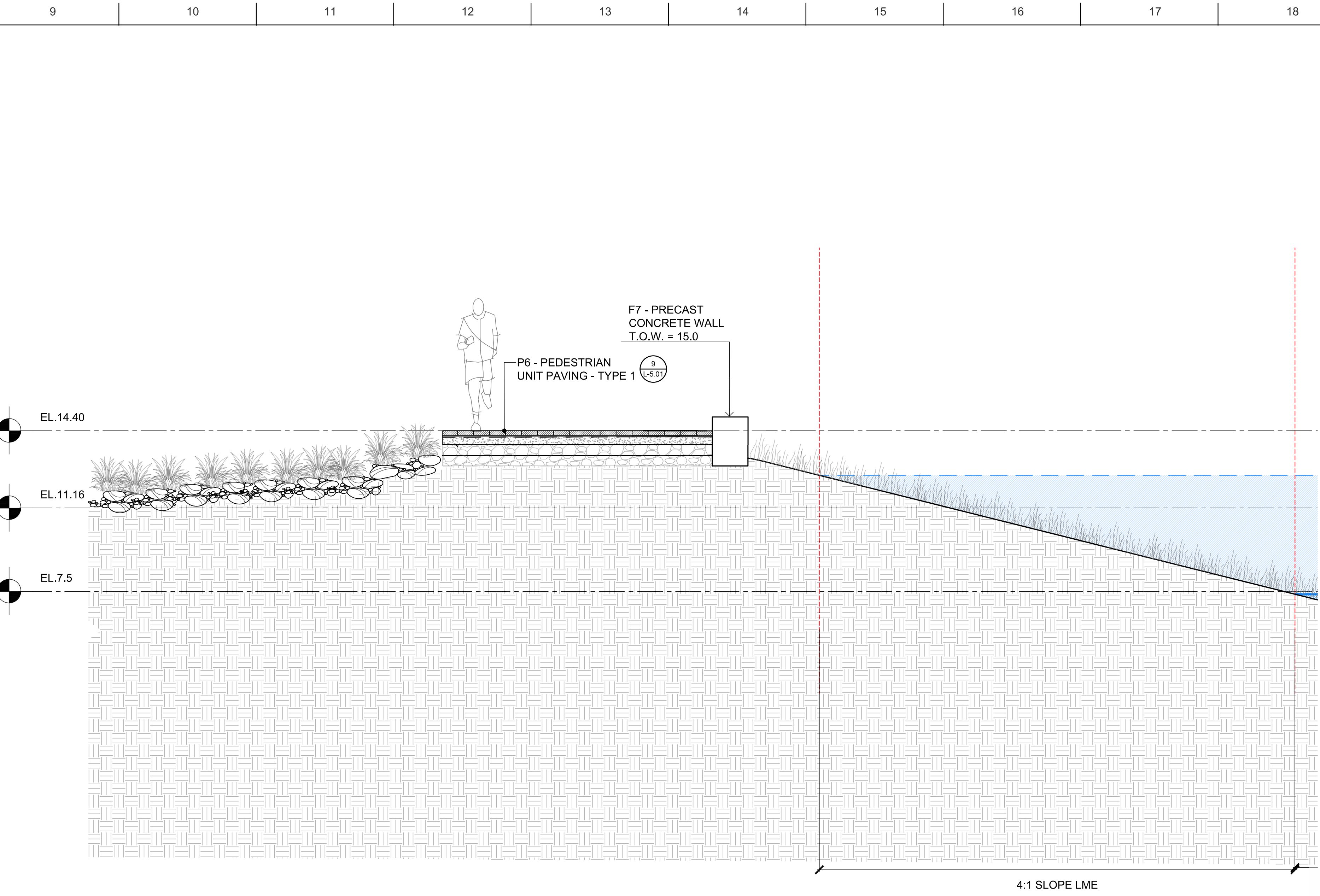


DRC

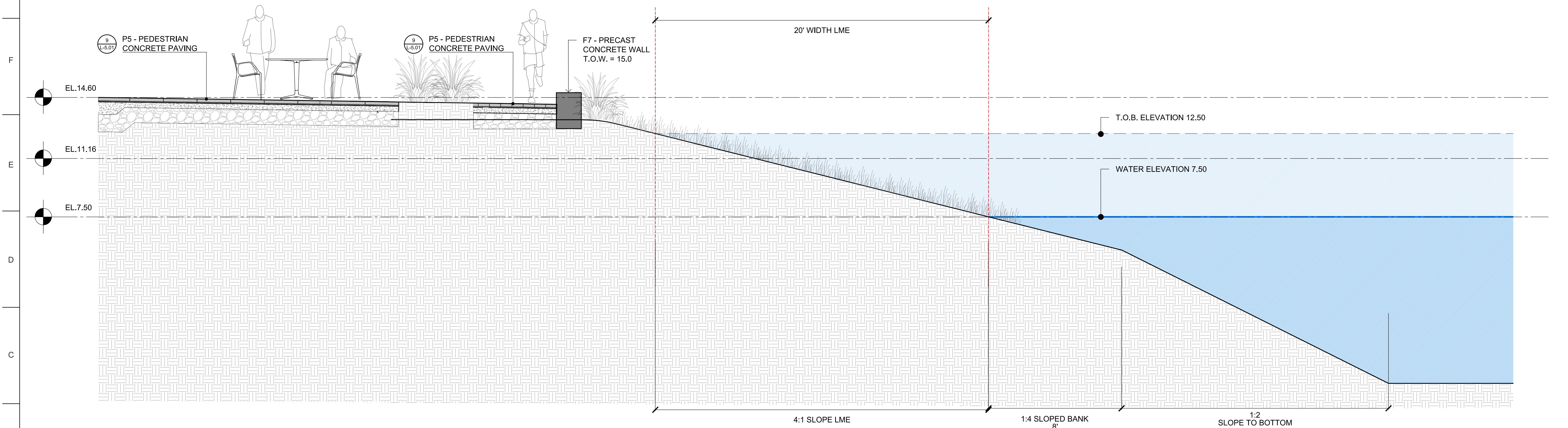
PZ25- 12000042
12/17/2025



1 EDGE AT STORMWATER LAKE - KEY PLAN
SCALE: 3/32" = 1' - 0"



2 EDGE AT STORMWATER LAKE SECTION
SCALE: 3/8" = 1' - 0"

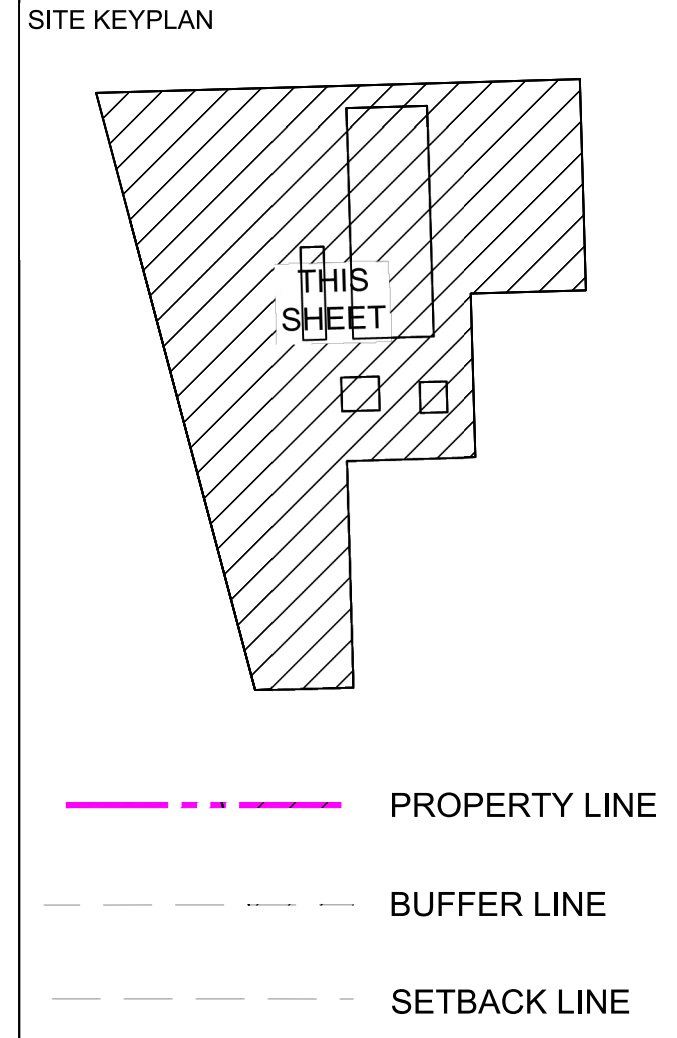


3 EDGE AT STORMWATER LAKE SECTION
SCALE: 3/8" = 1' - 0"

CLIENT
BROWARD COUNTY
Transit
1 N University Dr, Plantation, FL, 33324

COPYRIGHT
This drawing has been prepared solely for the intended use, thus any reproduction or distribution for any purpose other than authorized by Arcadis is forbidden. Written dimensions shall have precedence over scaled dimensions. Contractors shall verify and be responsible for all dimensions and conditions on the job, and Arcadis shall be informed of any variations from the dimensions and conditions shown on the drawing. Shop drawings shall be submitted to Arcadis for general conformance before proceeding with fabrication.
Arcadis Professional Services (USA) Inc.

| ISSUES | | |
|--------|------------------------|------------|
| No. | DESCRIPTION | DATE |
| A | SD Release | 2023-08-31 |
| B | DD Release | 2024-03-29 |
| C | DRC RELEASE | 2024-05-29 |
| D | 50% CD PRICING RELEASE | 2024-07-17 |
| E | 80% CD Release | 2024-10-14 |
| F | 100% CD QA/QC RELEASE | 2024-11-27 |
| G | 100% CD RELEASE | 2024-12-16 |
| H | 100% CD QA/QC-2 | 2025-10-17 |
| I | ISSUED FOR SPA-MOD | 2025-11-12 |



ARCHITECT:
ARCADIS
ARCADIS
7000 N FEDERAL HWY - 2ND FLOOR
BOCA RATON, FL 33487
(954) 886-8800
contact: JAY KELLY
email: jay.kelly@arcadis.com

CIVIL ENGINEER:
ARCADIS
ARCADIS
7000 N FEDERAL HWY - 2ND FLOOR
BOCA RATON, FL 33487
(954) 886-8800
contact: PATRICIA RAMALHO
email: patricia.ramalho@arcadis.com

LANDSCAPE PLACEMENTS:
ARCADIS
ARCADIS
21 CUSTON HOUSE ST - 3RD FLOOR
BOSTON, MA 02110
(617) 886-2200
contact: PHIL COLLIERAN
email: phil.colleran@arcadis.com

SITE ELECTRICAL:
ARCADIS
ARCADIS
21 CUSTON HOUSE ST - 3RD FLOOR
BOSTON, MA 02110
(617) 886-2200
contact: KATHY SCHAEFER
email: kathy.schaefer@arcadis.com

STRUCTURAL ENGINEER FOR BUILDINGS:
JEZERINAC
JEZERINAC GROUP
1615 FORUM BL, 3A
WEST PALM BEACH, FL 33411
(561) 333-7225
contact: BILLY RADICA
email: billy@jezerinacgroup.com

STRUCTURAL ENGINEER FOR CANALS:
LANDSAY/VOHLEN ENGINEERING, INC.
LANDSAY/VOHLEN ENGINEERING, INC.
2211 NE 45TH STREET
FORT LAUDERDALE, FL 33308
(954) 771-0000
CONTACT: LANDAS NARAYANAKARA
EMAIL: LYE@VOENGINEERING.COM

MEEP:
SEC
SMITH ENGINEERING CONSULTANTS
2101 PALM BEACH LAKES BLVD
SUITE 170
WEST PALM BEACH, FL 33411
(561) 816-9911
contact: STEVE P. HOCKMAN
email: steve@smithengineeringconsultants.com

PRIME CONSULTANT
ARCADIS
7000 N Federal Highway
Boca Raton FL 33487 USA
tel 561 333 6555
www.arcadis.com

PROJECT
COPANS TRANSIT
OPERATIONS FACILITY
3201 W Copans Road
Pompano Beach, FL

PROJECT NO:
136677

DRAWN BY:
HG, KS, ME

CHECKED BY:
KS

SCALE:
NTS

APPROVED BY:
PC

SHEET TITLE
LANDSCAPE SECTIONS

SHEET NUMBER
L3.01

ISSUE
I

NOTE: IF SHEET IS LESS THAN 30in x 42in, IT IS A REDUCED PRINT.